

Consultation on New Leicester Local Plan Beaumont Leys Community Meeting 4th October 2017



The Importance of a Local Plan

- Sets council's policies and allocates sites up to 2031
- Meeting needs for homes, jobs, shopping, and leisure
- Encourage investment & economic growth
- Placemaking
- Policies to consider planning applications



Public Consultation

- July to 31st October 2017
- <https://consultations.leicester.gov.uk/sec/local-plan/>
- Citizen Space Website
- City wide consultation leaflet
- 'Your Leicester'
- Press release
- Social Media
- Public Exhibitions
- Programme of Neighbourhood and Stakeholder meetings



Consultation Documents

- Four separate documents
 - Emerging Options
 - Development Management Policies
 - Sites Options Document
 - Sustainability Assessment
- Supporting Evidence Base
- Responses will inform the Draft Local Plan submission



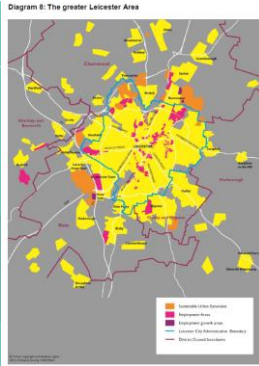
Housing

- Housing Need - 34,000 by 2031 (1,700 a year)
- Where should growth go – difficult choices
- Any unmet need will need to be redistributed to adjacent districts



Strategic Context

- Strategic Growth Plan
- Managed Growth of city in adjacent boroughs
- Infrastructure:
 - Transport
 - education



Local Housing issues

- Requirements for starter homes and affordable housing?
- Houses in multiple Occupation/Student Housing
- Standards (space and accessibility)



Employment

- Need for 45 Ha Employment Land
- Office provision in the City Centre – where?
- Poor quality employment land?



City Centre & Regeneration



Shopping Centres & Retailing

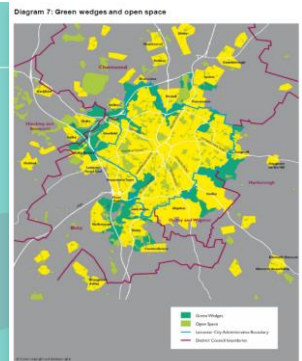
- New retailing and leisure uses in city centre - Where should this go?
- Suggested changes to boundaries of local shopping centres
- Hot Food Takeaways/gambling/pay day loans



Open Space

- Includes open spaces, wildlife sites, sports pitches
- Could poor quality Green Space provide sites for housing, employment?
- Specific questions on views of value of open spaces:

<http://consultations.leicester.gov.uk/sec/local-plan/consultation/subpage.2017-07-05.8002806164/>



The Green Environment

- Sports facilities
- Air Quality
- Draft Climate Change/flood risk policies
- Biodiversity



Heritage, Culture & Tourism

- Draft policies to conserve or enhance the significance of the city's Heritage assets
- Promote Cultural, community, Leisure and tourism uses e.g. places of worship, crematoriums
- Need to assess amenity impacts carefully



Delivering Quality Places: Design

- High quality design for buildings, spaces and layouts
- Draft Tall buildings policy
- Draft policy to control Advertisement Hoardings



Public Health

Key data indicators	Leicester	England
Life expectancy (males/females)	77 / 82	80 / 84
Healthy life expectancy (males/females)	59 / 60	63 / 64
Density of fast food outlets (Outlet per 100,000 population)	127	88
Utilisation of outdoor space for exercise/health reasons	12%	18%
Air pollution: fine particulate matter*	10	8
Living Environment deprivation** - % living in most deprived 20% areas nationally	46%	20%
Overcrowded households (% of households)	10%	5%
Fuel Poverty (% experiencing fuel poverty)	14%	10%
Parkland and open spaces	22%	

How do we compare to England?



Division of Public Health, Leicester City Council

Transport

- Draft policy based on Midlands Connect emerging Strategic Transport Plan
- Improve existing highways network
- Continued improvements needed to public transport
- Increase cycling and walking opportunities

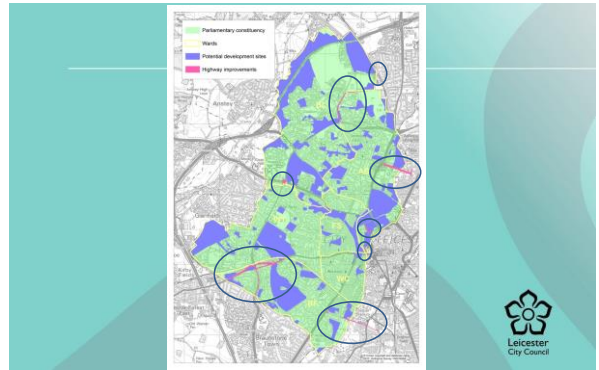
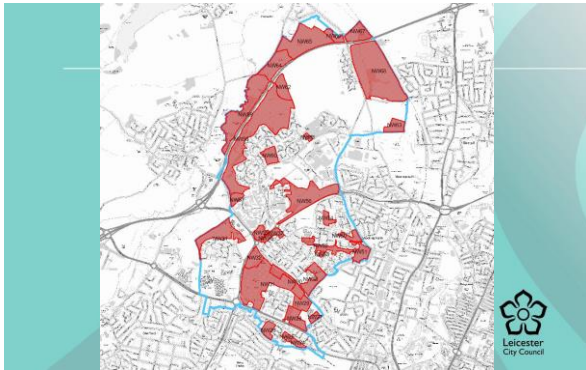
INFRASTRUCTURE AND THE MIDLANDS CONNECT STRATEGY



Infrastructure

Policies to secure contributions towards essential infrastructure: Schools, Transport, open space





Comments and Issues for consideration?



Timetable

- Public Consultation July - October 2017
- Scrutiny during Consultation Period
- Draft Local Plan: Winter -Spring 2018
- Public Examination and plan adopted: end of 2018

